



COMPANY PROFILE 2023

Dedicated System Integrator
Shaping the Future of Cognitive and Efficient Buildings



Table of Content

We extend a warm welcome to CEnergy, a dynamic and visionary company positioned at the forefront of the ever-evolving Building Solution industry. Within the pages of this comprehensive company profile, we cordially invite you to embark on a journey of exploration, as we share insights into our overarching vision, diverse range of products and services, and the strategic frameworks that underpin our continued success.

Message From Management	01
About Our Company	02
About CSI Global	03
CEnergy Foundation	05
CEnergy Services	05
CSI Group Selected Experiences	09
CSI Group Some Clients	11

Message From **Management**

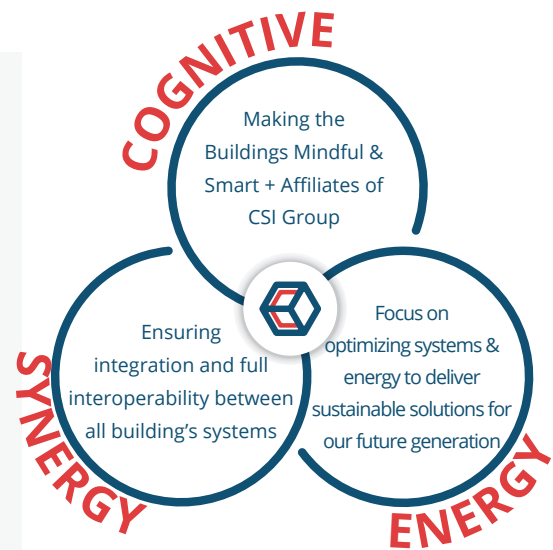
Welcome to CEnergy, a leading **System Integrator** that specializes in providing end-to-end Building Solutions for businesses of all sizes.

With a team of highly experienced professionals, we aim to deliver top-notch services that help our clients streamline their operations and achieve their business goal.

Our **Story** ”

Founded as a vision of its founders with a professional leadership in early 2023, CEnergy came to the light as the realization of market demand in optimized solution for building technologies and CSI commitment of its motto “Converting Energy to Synergy.”

Having the vision, commitment and leadership combined, the management was entrusted to the co-founder Mr. Mohammed El Hussein to utilize the resources and platform, building on what is achieved and developed more than 100 years of accumulated experience of the founders into shaping new horizons of buildings systems solutions.



About **Mohammed El Hussein**

Co-Founder and Managing Partner

Mohammed is the chief architect in setting the scope, vision and strategy for CEnergy. He had a successful career with Multiple Global Corporates latest with Honeywell and prior with Siemens, spanning over 20 years. His career started on gaining technical and project execution knowledge and quickly gained leadership roles with increasing responsibility, with cross functional experience in the areas of general management, sales, marketing, aftersales, manufacturing and customer excellence. His market experienced spanned into different geographies across the META (Middle East Turkey and Africa)



Under his Leadership, Mohammed was able to grow business exponential to new levels. His experience as a leader is centred around organizational transformation. He was able to drive successfully multiple Breakthrough Initiatives including Mega Projects across META, Smart City Solutions, Energy Performance Contracting and Critical Infrastructure Solutions.

Mohammed was named in multiple awards including Sales Excellence and Sr. Leadership Programs.

Mohammed holds a Bachelor Degree in Electrical Engineering specialized in Electromechanical Systems.



About Our **Company**

01. **CEnergy Vision**

Provide integrated solutions to buildings' construction and operation stakeholders, ensuring design criteria achievements, high efficient levels meeting towards a long term sustainable operation.

02. **CEnergy Mission**

To position CEnergy as reference in the Building System Integrator domain Globally with ability to shape the future of buildings and facilities operation applying disruptive technologies to utilize the available resources synergically and cognitively.

03. **CEnergy Operating Verticals**

- ◆ *Aviation*
- ◆ *Commercial*
- ◆ *Hotel & Resort*
- ◆ *Medical Facilities*
- ◆ *Transportation*
- ◆ *Residential*
- ◆ *Museum*
- ◆ *Military*
- ◆ *Infrastructure*
- ◆ *Data Center*
- ◆ *Educational*
- ◆ *Industrial*

04. **Trinity of Success: (CCC)**

Complete: Our solutions are not limited by system integration point of view but aided and supported by our holistic view gained by our hands on experience in related scope of works

Community: Our services are always putting community welfare as the ultimate goal applying the latest standards and meeting the most updated regulations requirements

Cognitive: Always grasping disruptive technology approaches, we aim to make the systems alive & communicating with AI and ML Technologies implementation

CSI Group Presence

UAE - Egypt - Europe - KSA - Turkey - Qatar - Jordan
Bahrain - USA - UK



Global



250+
Senior & Field
Engineers

60+ Project
Manager

600+ Qualified
Technicians

CSI is a leading provider of MEP engineering services with a strong focus on client satisfaction and delivering exceptional results. CSI values the synergy between seasoned professional experience and young energy, ambition and embraces innovation to remain at the forefront of the industry. The company's culture of excellence is evident in every aspect of its operations, from talent recruitment to rigorous training programs.

At CSI Global, we take great pride in our highly skilled team of engineers and technicians who possess an impressive array of certifications. Our professionals have successfully obtained certifications from renowned organizations including NEBB, CEM, CSA, LEED, Schneider, and more. Additionally, our company holds international certifications, further demonstrating our commitment to excellence and expertise in delivering top-notch solutions to our valued clients.



CEM®



BSRIA



CEnergy being part of CSI group of companies specialized in complementing solutions cement the position of CEnergy to deliver projects on its commitment instantly with proven record and successful delivered project.



Under the **CSI Group Umbrella**



CSI Engineering established its presence in Dubai in 2016 and made it our headquarters for our global operations.

CSI Engineering is a leading expert in the field of Testing & Commissioning (T&C), TAB (Testing Adjusting and Balancing), and comprehensive handover documentation. Our team is composed of certified professionals with extensive experience in the industry, ensuring that we provide exceptional services to our clients. Our company is committed to delivering high-quality workmanship and ensuring that all necessary certifications are up-to-date and maintained, making us a trusted partner for all your testing and commissioning needs.



CSI ATS, also known as Advanced Technical Services, stands as an esteemed and reputable professional services organization that excels in delivering a wide array of cutting-edge solutions in the realms of Operations and Maintenance, MEP Fit-out, Facility Management, MEP Solutions, as well as Electrical Testing. With a steadfast commitment to excellence and a profound understanding of industry dynamics, CSI ATS sets the gold standard in offering unparalleled expertise and comprehensive support across diverse sectors. From optimizing operational efficiency to implementing bespoke MEP solutions, our distinguished team of professionals harnesses their extensive knowledge and experience to empower businesses, ensuring seamless functionality and elevated performance at every turn. By leveraging our unwavering dedication to quality, innovation, and customer satisfaction, CSI ATS remains at the forefront of driving organizational success and enhancing the overall experience for our esteemed clientele.



BIM Pro is a cutting-edge company that offers comprehensive building design and engineering services. With a focus on accuracy and attention to detail, their services range from architectural, civil, and MEP modeling to site BIM management, design analysis, and load calculation. BIM Pro also provides 3D and thermal scanning services, as well as Redline as-built drawing services, ensuring that every detail of a building project is captured accurately. With their commitment to excellence, BIM Pro is revolutionizing the building industry and bringing their clients' visions to life.



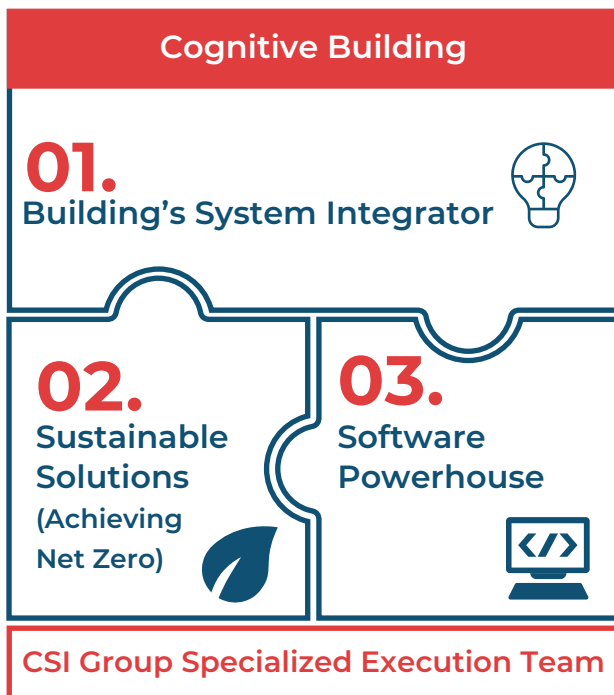
CSI Technologies is an innovative IT solutions company that offers a wide range of services, including software development, cloud computing, and ERP solutions. We specialize in network design and cyber security, offering backup planning and disaster recovery services. With a focus on innovation, CSI Technologies is always working on new ideas and producing specific software to find solutions for clients in various industries. Our team of experts delivers exceptional customer service and provides cutting-edge solutions to help businesses stay ahead of the curve in the ever-evolving world of technology.



CEnergy Company **Foundation**



Build on **3 Pillars** of the Cognitive Building:



Enabling continuity from delivering Today's systems to sustainable and futuristic technology ensuring bright future for **Next Generation**.

The base is strongly powered by experienced execution team from CEnergy affiliates of companies to deliver its commitment and satisfy customer needs.

Covering
Life Cycle of
the Building:



CEnergy **Services**

We are committed to revolutionizing the way buildings operate and enhancing the experiences of their occupants. Our Services offers a comprehensive overview of the solutions and expertise we bring to the table. From our cutting-edge technologies to our sustainable practices, we strive to deliver integrated systems that optimize performance, improve energy efficiency, and ensure a seamless user experience.



System Integrator

- Projects New Installation
- Service System Maintain, Upgrade & Retrofit
- BMS & EMS
- Fire Alarm & PAVA
- Security (Access & CCTV)
- GRMS & LC



Sustainability Solutions

- EPC Contracting & Services (Audits, Implementations & Certifications)
- Assets Assessment, ESG, LEED & WELL Certifications Services
- EVCS (Electric Vehicle Charging Stations)
- Metering Solutions (BTU, Electricity, Water & Gas)



Software Powerhouse

- Digital Twin
- Operation Optimization and Remote Services
- Buildings youth with AI & ML



01. System Integrator

Our scope of work includes:

- I. Design and Planning:** Our team of architects and engineers work closely with clients to create custom designs that meet their vision and requirements. We provide detailed planning and feasibility studies, incorporating sustainable and cost-effective solutions to optimize the design and functionality of the building.
- II. Construction and Project Management:** We have the expertise to manage all aspects of the construction process, from procurement to execution. Our team ensures that projects are completed on time, within budget, and in compliance with regulatory requirements. We closely monitor progress, quality, and safety, and provide regular updates to clients.
- III. Renovation and Retrofitting:** Our team is skilled in renovating and retrofitting existing buildings to enhance their functionality, aesthetics, and energy efficiency. We carefully assess the existing structure and develop solutions that maximize the value of the property while minimizing disruptions to ongoing operations.

BMS & EMS

- Integrated Building Management System
- BMS Retrofit and Upgrades
- HVAC Controls
- Air Quality Control
- Energy Management System
- Electrical Management System

Fire Alarm & PAVA

- Fire Detection & Alarm System
- Public Address and Voice Evacuation System
- Aspirating detection System
- Mass Notification System
- Gas Detection & Alarm System
- CO Car Park Monitoring System
- Disable Toilet System

Security (Access & CCTV)

- CCTV System
- Access Control System
- System Retrofit and Upgrade
- Infrastructure Security Solutions
- Command and Control Center

GRMS & LC

- Guest Room Management System
- Lighting Control System
- Hotel Door Lock System
- Guest Room Entertainment



02. Sustainable Solution

EPC (Energy Performance Contracting)

- Energy Audit
 - Level I: Walk-Through Analysis
 - Level II: Energy Survey and Analysis
 - Level III: Detailed Analysis of Capital Intensive Modifications
- Measurement & Verification
- Energy Retrofit and Optimization
- Energy Management
- Energy Modeling

Electric Vehicle Charging Solutions

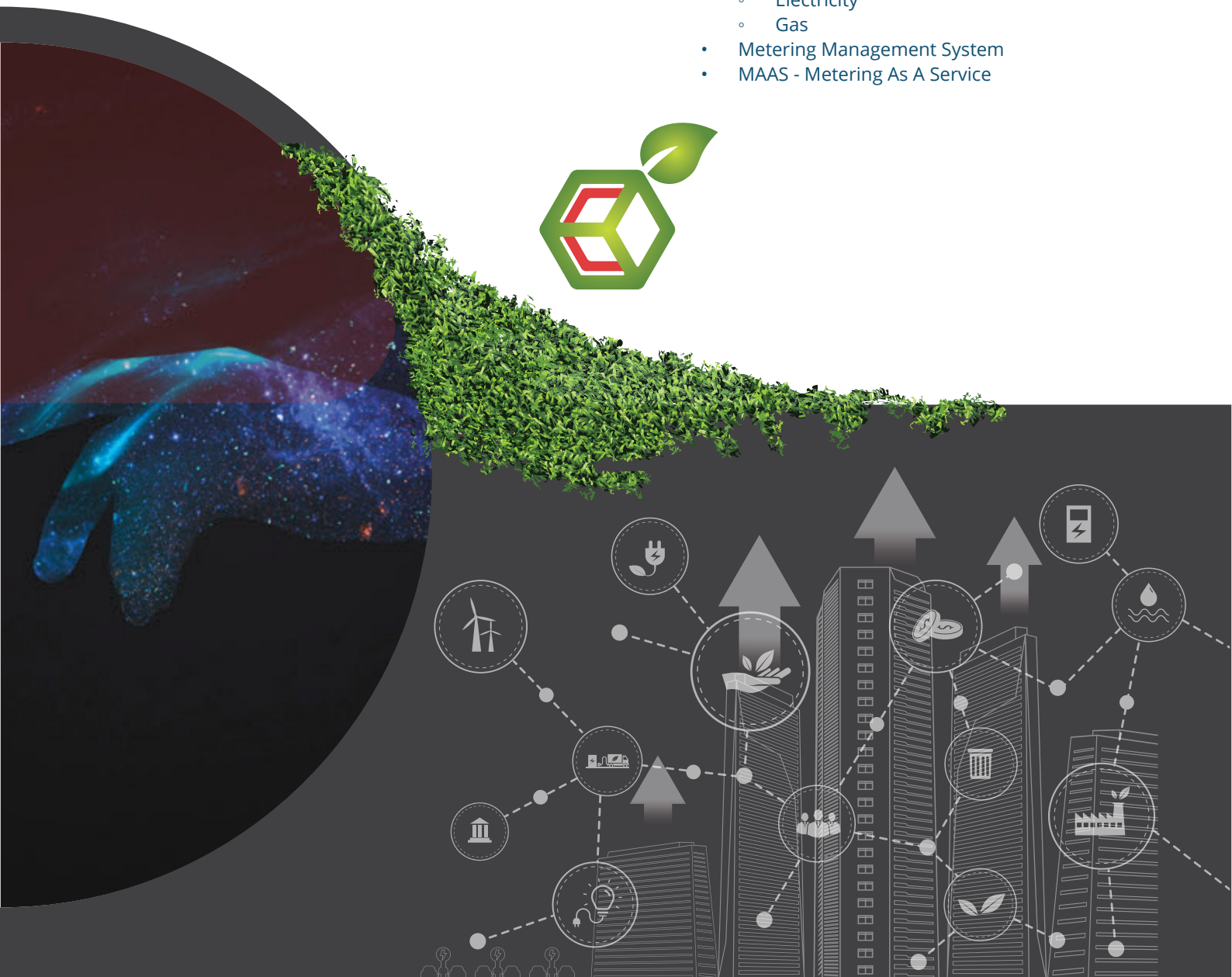
- Electric Cars Chargers
- Software Platform
- Management software services

Improve Building Performance

- Helping Buildings and to Achieve:
 - Net Zero & Carbon Neutrality
- Buildings energy performance consultancy services
 - LEED
 - WELL
 - ESG
- Assets Condition Assessments

Metering Solution

- Metering solutions:
 - BTU
 - Water
 - Electricity
 - Gas
- Metering Management System
- MAAS - Metering As A Service



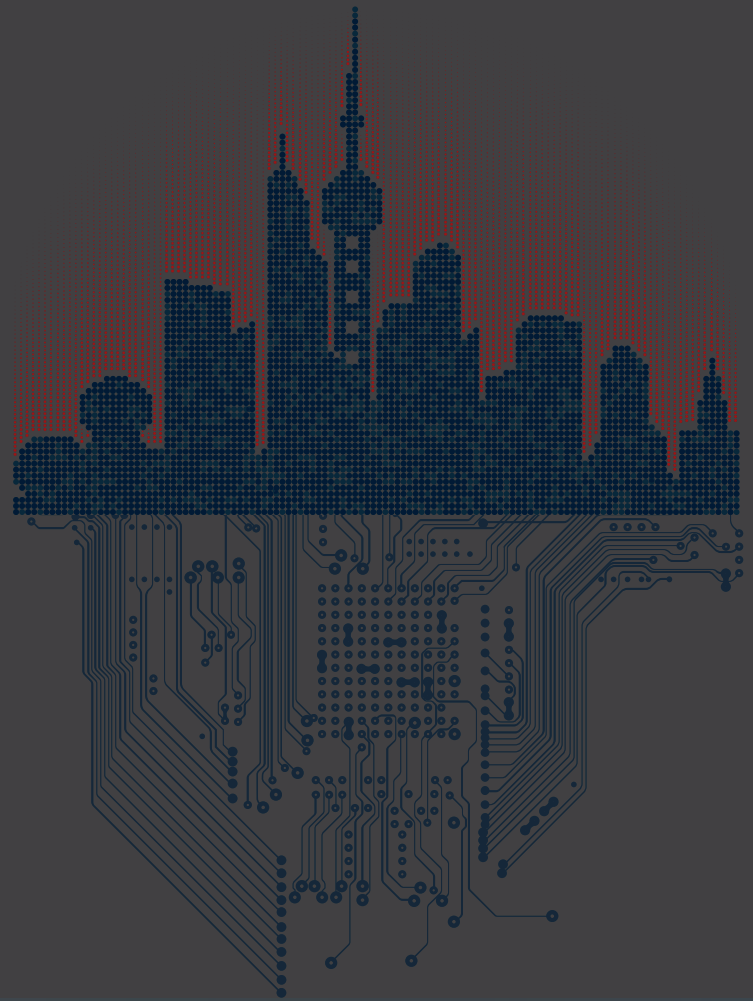
03. Software Powerhouse

Digital Twin

- Virtual representation of a physical asset and systems
- Combine systems in 1 Platform:
 - BMS
 - CMMS (Asset and FM)
 - 3D BIM Modeling
 - ERP Systems
 - Energy Modeling
- Building Augmented Reality
- Building Energy Modeling
- Offline System Demonstration

Operational Optimization

- Full Operational Digital Transformation
- Remote Services
- Operational Optimization
- AI & ML Powered solutions

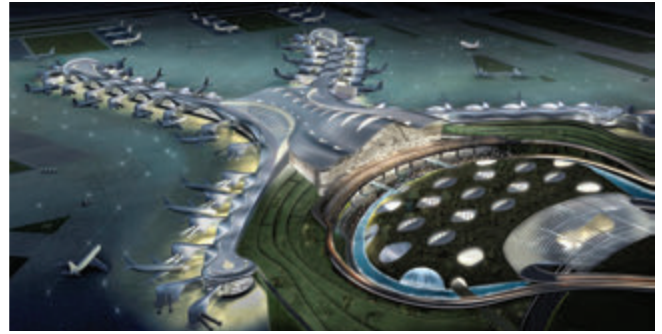


CSI Group **Selected Experiences**



King Abdullah Financial District

Location: Riyadh, Kingdom of Saudi Arabia
Owner/Developer: Public Investment Fund of Saudi Arabia
Consultant/PM: JLL & Atkin
Main Contractor: Salini
Scope of Work: Site Survey for MEP Work



Abu Dhabi International Airport MTB

Location: Abu Dhabi, United Arab Emirates
Owner/Developer: Abu Dhabi Airports Company (ADAC)
Consultant/PM: AECOM
Main Contractor: TAV Consolidated Contractors Company Arabtec JV (TCA JV)
Scope of Work: MEP Systems Commissioning Management / IT Systems Commissioning Management / Construction Snagging Tracking, Coordination Support & Facility Management



Bahrain International Airport Modernization

Location: Manamah, Kingdom of Bahrain
Owner/Developer: Bahrain International Airport
Consultant/PM: Hill International
Main Contractor: TAV Arabtec JV
MEP Sub-Contractor: SONMEZ
Scope of Work: MEP Systems Commissioning Verification / HVAC Systems TAB Works Supervision



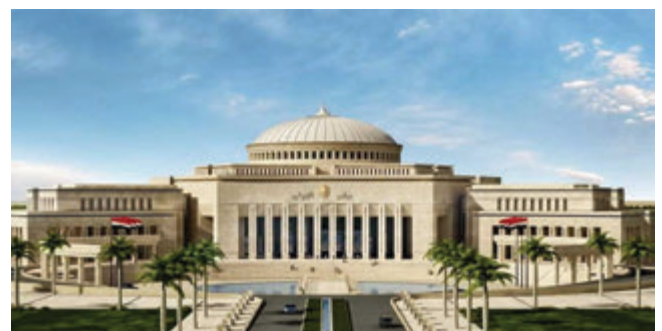
Museum of The Future

Location: Trade Center 2, Dubai, UAE
Owner/Developer: Meraas
Consultant/PM: Burohappold Engineering
Main Contractor: Bam Higgs & Hill LLC
MEP Sub-Contractor: Trans Gulf Electro Mechanical
Scope of Work: HVAC Testing, Adjusting and Balancing Works



Hilton Garden Inn – Avenues Hotel

Location: Bahrain Bay, Manama, Kingdom of Bahrain
Owner/Developer: Bareeq Al Retaj Real Estate Services WLL
Consultant: SSH Engineering
Contractor: Delta Construction Co. W.L.L.
Scope of Work: HVAC System Testing, adjusting and balancing Works



The New Parliament Building

Location: New Administrative Capital, Egypt
Client: ACUD
Consultant: Dar Al Handasah
Main Contractor: The Arab Contractors
Scope of Work: HVAC System Testing, Adjusting and Balancing Works



Kayan 110 Project

Location: New Capital of Egypt
 Client: Ministry of Defense
 Consultant: Sabbour
 Main Contractor: Siac, Samcrete and The Arab Contractors
 Scope of Work: HVAC System Testing, Adjusting and Balancing Works



Second Line of Warsaw Metro East Extension

Location: Poland
 Client: Astaldi & Gulermak
 Scope of Work: Testing and Commissioning of Station C16 - C18



Al Thumama Stadium

Location: Al Thumama, Qatar
 Client: Supreme Committee for Delivery & Legacy
 Consultant/PM: AEB/Time Qatar
 Main Contractor: Al Jaber Engineering L.L.C & Tekfen Construction and Installation Co., Inc. J.V
 Scope of Work: MEP Systems Commissioning Management and Asset Register Preparation



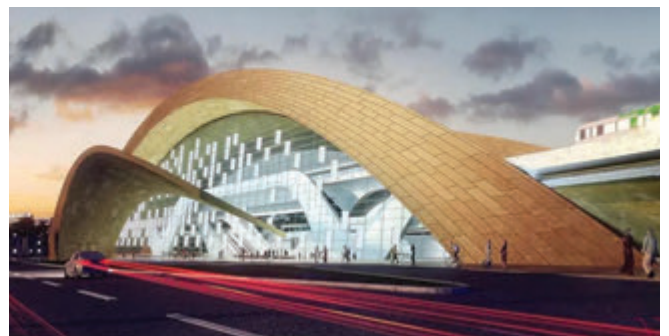
S52 The Southern Bypass

Location: Warsaw/Poland
 Client: General Director for National Roads and Motorways Krakow branch
 Main Contractor: Gulermak
 Scope of Work: Verification of Documentation to Zrid in Accordance with the Contract Requirements for the MEP Installation in Tunnels



US Navy Base in NSA1

Location: Juffair, Kingdom of Bahrain
 Owner/Developer: Naval Facilities Engineering Command
 Consultant: Naval Facilities Engineering Command
 Main Contractor: Kooheji Contractors
 MEP Contractor: International Agencies Co Ltd. (Intercol)
 Scope of Work: Testing and Commissioning Management



Riyadh Metro Line 2 (6 Surface Stations)

Location: Riyadh, Kingdom of Saudi Arabia
 Owner/Developer: Arriyadh Development Authority (ADA)
 Consultant: Riyadh Metro Transit Consultants
 Main Contractor: BACS JV
 MEP Sub Contractor: HAPCO Co.
 Scope of Work: Testing Adjusting and Balancing Works

CSI Group, **Some Clients**



CSI Group, **Some Clients**







COMPANY PROFILE 2023

GET IN TOUCH



Number : +971 48 888 446

Mobile: +971 56 404 3250

Website : CEnergyTech.com

Email: info@cenergytech.com

Adderss : DIP-1 C.E.O Building Office No: 215
PO: 414055 Dubai/ UAE